

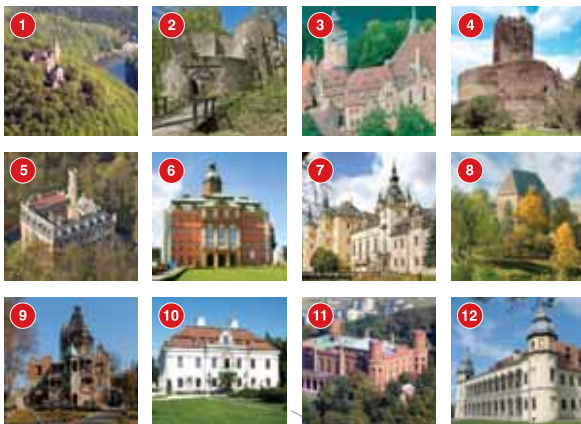


DOLNOŚLĄSKA  
ORGANIZACJA  
TURYSTYCZNA

Lower Silesian Tourist  
Organization



Palaces and castles  
of Lower Silesia



## 1. Grodno Castle

### Location

Grodno Castle is situated on the peak of Choina (450 m above sea level) in the northern part of the Sowie Mountains. It overlooks a picturesque valley of the Bystrzyca Świdnicka.

Also dating from this period is the fore-gate, one of the most beautiful buildings of the kind in Poland. The eighteenth-century sundial also presents a great tourist attraction.

### Historical Background

The castle dates back to 1198, to the time of Duke Boleslaus the Tall. Over the centuries the castle changed owners several times, and its greatest prosperity occurred in the sixteenth century – under the rule of Maciej of Glogów. As a result of later armed conflicts it was destroyed several times and fell into ruin. In 1951, after World War II, the restoration works began and they are still ongoing.

[www.grodnozamek.pl](http://www.grodnozamek.pl)

### Present

The castle was rebuilt and upgraded several times over the centuries, hence in the old walls one can find remnants of many architectural styles. Particularly beautifully present the Renaissance sculpted details.



## 2. Bolczów Castle

### Location

The castle is situated in Rudawy Janowickie Mountains, on a rocky hill near the stream called Janówka.

modern, even for those times. The building harmonizes with the picturesque surroundings to such an extent, the constructors' meticulous work is admired even today. Destroyed during the Thirty Years' War the castle never returned to its former glory. At the end of the eighteenth century it became a tourist attraction, in 1824 was visited, inter alia, by the Prussian King Friedrich Wilhelm III.

### Historical background

The castle's erection in the second half of the fourteenth century is attributed to a knight named Clericus von Bolz, a courtier of the dukes of Świdnica and Jawor. The fortress was extremely

### Present

The upper castle is the oldest part of the complex. The sixteenth-century gate system with a tower, bastion and barbian leading to the bridge over the moat is very well preserved. The picturesque ruins are now one of the most popular weekend tour destinations for the residents of Lower Silesia.

[www.zamkipolskie.com](http://www.zamkipolskie.com)



### 3. Czocha Castle



#### Location

Czocha Castle is delightfully situated on a rock headland hill cutting into the Kwisa river valley, towering above the picturesque neighbourhood.

#### Historical background

In the place where Czocha Castle stands today, in the early Middle Ages there was a wooden fortress with a stone-and-earth fortifications. In the late thirteenth and fourteenth century a brick fortress was built there by Czech King Vaclav II. The most tragic event in the history of Czocha took place in 1793, when during the absence of the owner a fire broke out at the castle in very unclear circumstances. A well-equipped library with many rare editions, antique furniture and the whole armoury, all burned down that day. In the early twentieth century the castle was purchased by Ernest von Gutschov from Dresden. He aspired to be a legitimate duke. Owning the fortress was to be an argument in his efforts to the title. He therefore spared no money to give it the appearance worthy of a duke. In January 1945, Ernest von Gutschov alarmed by the

approaching front, had all the valuables from Czocha Castle packed in order to take them away to Dresden. However, he failed to ensure the transport's safety and part of the ancient works of art was lost forever. After the war the castle became a leisure centre for Polish Army officers, so it avoided the fate of other Lower Silesian strongholds and survived to this day in a very good condition.

#### Present

Today Czocha Castle is one of the biggest attractions of the region. An on-site holiday house located here before has been arranged into a hotel and a restaurant. Tourists enjoy looking into "the well of unfaithful wives", from which apparently



some groans and lamentations can be heard. Legend has it a certain Christopher Nostitz drowned his wife Gertrud in it in a jealous rage. Two storeys high Knights' Hall is really impressive, as well as the tower and the dungeons. Very well maintained bicycle paths and hiking trails lead to the castle. In recent years two films were shot here: "The Witcher" and "The Secret of the Cipher Fortress".

[www.zamekczochoa.pl](http://www.zamekczochoa.pl)



### 4. Bolków Castle

#### Location

Bolków Castle towers over the valley of the Nysa Szalona River. It was built on a hill situated 396 m above sea level.

#### Historical background

The Gothic castle was founded during the reign of Bolko I and the earliest mention of it dates from 1277. The present name of the castle comes from the name of Duke Bolko I the Strict. A thorough development of the castle was made in the fifteenth century, from this period dates the Renaissance residential area called "House of Ladies." The Thirty Years' War wrought greatest havoc in the castle. In 1703, the fortress was purchased by the Cistercians from Krzeszów and after secularization of the order in 1810 it became the property of the state. Since 1994 extensive restoration work is in progress.

#### Present

A visit in the medieval fortress is an unusual experience bringing back the ancient times. This impression is most vivid dur-

ing chivalry fights and medieval dances, organized by Brotherhood of Knights in Bolków Castle established in 1994. A landmark of the castle is a tower built on the plan of drop of water. Thanks to this shape the bullets fired at the castle were slipping from the wall, causing not much damage.

[www.zamek-bolkow.info.pl](http://www.zamek-bolkow.info.pl)



### 5. Karpniki Castle

#### Location

Karpniki Castle is located in Karpniki, in Rudawy Landscape Park near Jelenia Góra.

#### Historical background

According to the historical sources, the castle was built on the knight Henry Czirna's order. The original plan was to create a residential building with a cylindrical corner tower. In 1475, another owner of the building expanded it by an-

other residential building. The two buildings connected by stone walls formed a courtyard.

#### Present

Today the castle is in private hands. Visiting the building is only possible on the outside, because the owner did not make it available to the public.

[www.zamkipolskie.com](http://www.zamkipolskie.com)



## 6. Książ Castle

### Location

Książ Castle is located within the administrative borders of Walbrzych, on the river Pelcznica in Książański Landscape Park.

### Historical background

The Castle's documented history begins when Bolko I Duke of Świdnica and Jawor ordered a reconstruction of the destroyed fortress. Later the castle was passed from one owner to another, not always among the men of honour, eg. brothers Schellendorf - robbers famous in whole Lower Silesia. Over the next 100 years the castle changed owners seven times, until in 1509 it was acquired by Conrad Hochberg. In this way, the castle became the headquarters of one of the wealthiest and most influential families in Silesia. During the Thirty Years' War the stronghold was besieged and captured several times. In 1705 the castle became the property of Ernest Maximilian von Hochberg, who transformed it into a fabulous Baroque residence. In the nineteenth century the Hochbergs received the title of Princes of Pless. Książ became a place visited by distinguished guests: the future U.S. president John Quincy Adams, Tsar Nicholas, the Emperor Franz Joseph and



and corridors which were likely to be Hitler's headquarters.

### Present

Książ together with the surrounding park is the third – after Malbork and Wawel – Castle in Poland. The biggest and richest room of the castle is Maximilian Hall – ballroom decorated with two facing each other ornate mantelpieces with crystal mirrors. The walls and floor are lined with marble and the chandeliers are carved from gilded linden. On the walls there are three balconies for the musicians.

One of the many attractions of Książ is stallion herd located near the castle. Stable buildings were built in the nineteenth century and until the 1930s they served as castle stables. Today there live 90 stallions and 40 mares of Silesian breed and Thoroughbreds.

The Palm House situated very close to the



Maharaja Cioch-Behar Sir Nripendra Narayan Bhp with his son.

In 1891, through the marriage with Henry XV, Maria Teresa, known as Princess Daisy, joined the family of Hochberg. The famous marriage did not last long, however, and they got divorced after World War I.

Shortly before World War II the Hochbergs lost a considerable part of their fortune. In 1941 Daisy was evicted from the residence. During World War II under the castle appeared secret underground passageways

Castle, was founded by Henry XV for Daisy. The glass building covers an area of 1 900 square meters, and there are more than 80 plants, representing species from all around the world, such as oleanders, citrus shrubs, various species of cacti and palms that still remember the Princess. The interior walls of palm house are lined with tuff of Etna volcano. The complex provides hotels, museums and cultural services.

[www.książ.walbrzych.pl](http://www.książ.walbrzych.pl)

## 7. Kliczków Castle

### Location

Kliczków Castle is situated in the Kwisa River valley, among the forests of Lower Silesia Wilderness.

### Historical background

The origins of the castle date back to 1297, when the Duke of Świdnica and Jawor Bolko I the Strict raised a wooden fortress on the riverbank of Kwisa. During the following centuries the castle changed owners, who each built some

the castle was designed as a whole in English style.

### Present

Today Kliczków Castle is an exclusive hotel, SPA centre, conference and recreational centre with posh restaurant. It is a great place for conferences, events, but also for active holiday combined with exploring the surrounding area.

[www.kliczkow.com.pl](http://www.kliczkow.com.pl)



extensions or changed the interior to a more modern mode. The most serious modernization took place in the late nineteenth century. The contemporary fashion of the time allowed architects to mix the styles and draw inspiration from different sources: English Gothic, Italian Renaissance, German Mannerism. Elements of these styles can be found on the facades and interiors of Kliczków Castle, especially in the beautiful Theater Hall. The 80-hectare park surrounding



## 8. Siedlecin Castle



### Location

Siedlecin village, near Jelenia Góra.

### Historical background

Siedlecin residential knight's tower was built at the beginning of the fourteenth century on the initiative of the Dukes of Świdnica and Jawor, who also founded numerous murals inside the tower. In 1369 Knight Jenhin von Redern bought the tower along with the nearby village.

In the fifteenth century second floor was built and covered with sloping roof. New court buildings appeared later and the castle has functioned in such arrangement until today

### Present

Siedlecin is a so-called chain village with very distinctive buildings. The medieval residential tower is now restored and available for tourists. One should go inside and admire a series of murals recounting King Arthur's most famous knight – Lancelot.

[www.zamki.net.pl](http://www.zamki.net.pl)



## 9. Wojanów-Bobrow Palace

### Location

The palace is situated within the Rudawski Landscape Park, on the bend of the Bóbr River, on its left bank.

### Historical background

According to legends, a fortified town designed to guard the crossing of the Bóbr River was built around 1450. However, no written historical sources confirm this tradition. It is certain that between 1598 and 1607 Nickel von Zedlitz built a renaissance mansion. Over the next two hundred years the property was passed from one owner to another, to be completely rebuilt by Hans Rudolf von Decker in 1894. The mansion remained in the Deckers family until 1921. Just before World War II, the government of the Third Reich acquired the palace, to start a SA training centre. In 1945 the Red Army stationed in the building. After that period it was assigned to various purposes. Demolition of the roof in the 70s resulted in enormous destruction of the palace.

### Present

Since 1994, the palace has belonged to the Polish-German Association for Promotion, Reconstruction and Maintenance of Historical



Values of Heritage, Culture and Tradition of Silesia, founded by Gunther Artman. It is a five-storey building with a rectangular tower in the middle of the palace. Facade is lined with red brick and thanks to the white corners of the building it is similar to the French renaissance. The palace has many turrets, bay windows and gables. Inside there is the large hall in which especially a vault supported on a monolithic column attracts much attention as well as a staircase with beautiful wall paintings.

[www.rudawyanowickie.pl](http://www.rudawyanowickie.pl)

## 10. Krasków Palace

### Location

The Krasków Palace lies within Świdnica County, in the administrative district of Gmina Marcinowice.

### Historical background

According to historical sources in 1250 a fortified castle lied here. During the Thirty Years' War it was destroyed, rebuilt and yet again destroyed in the eighteenth century. Count David Sigismund von Zeidlitz und Leipe purchased the ruins and as-



signed Fischer von Erlach, a master builder of worldwide renown, to rebuild them. His work resulted in a building which completely lost its defensive character and became one of the most beautiful Rococo works of art in Europe. World War II did not spare the palace and in 1945 the devastated building did not resemble the palace from its heyday. After half the century of deterioration and abandonment it was purchased by an Austrian, Thomas Gamperl. In 1992 started the reconstruction work.

### Present

The renovated palace was turned into a luxury hotel. The building and its grand gardens are available only outdoors. The interiors are partly open for tourist, e.g. a beautiful old library. The building is two storeys high with cellars and a loft. The most valuable architectural part is the front elevation divided with pilars.

[www.kraskow.pl](http://www.kraskow.pl)

## 11. Palace in Kamieniec Żąbkowicki

### Location

Kamieniec Żąbkowicki is a big village located at the foot of Bardzkie Mountains. The palace is situated on a small hill, on the Nysa Klodzka.

### Historical background

Duches of the Netherlands, Marianna Louise of Nassau initiated the construction of the palace and chose Kamieniec Żąbkowicki as the seat of the family residence. The design and its implementation were carried out by the eminent German painter and architect Karl Friedrich Schinkel. On October 15, 1838 the cornerstone was laid for the future Neoclassical building clearly referring to the Teutonic castle in Malbork. The park surrounding the palace was designed with huge terraces, a game system and the picturesque, romantic caves. The construction took over 30 years and cost around 1 million ducats, equivalent to almost 3 tons of gold. In 1873, the Duchess passed Kamieniec down to her son, Albrecht von Hohenzollern, as a wedding gift. The palace remained in the family until 1940, that is, until the last representative of a straight line of the family died. The building survived the war undamaged. In 1946 the Russians set fire to it starting its slow degradation in later years.

[www.zamkipolskie.com](http://www.zamkipolskie.com)

### Present

In accordance with the wishes of Duchess Marianna Louise of Orange, the palace at first glance refers to Romanesque architecture. It could even pass for a medieval castle, if not for large windows, external staircase and wide terraces of the conservatory. Now there remains only rubble or empty space of fountains, sculptures and columns that used to decorate the park. The current tenant of the land prevented further degradation of the building, but his financial resources are exhausted and the renovation works have slowed down significantly. In the palace there is a hotel for 60 guests and a café.



## 12. Krobielowice Palace

### Location

Krobielowice is a small village located about 20 km south-west of Wrocław, in the Landscape Park of Bystrzyca Valley.

### Historical background

The building was erected due to the needs of monastic manor administration. In 1814 King Frederick William III while secularizing the ecclesiastical goods in Prussia, presented Gerhard Leberecht von Blücher with the local ones. This capable military man, Commander-in-Chief of the Prussian army in 1813, became famous for his major contribution to the Allied victory in the battle of the Nations at Leipzig (1813) and Waterloo (1815). The palace belonged to the Blüchers until 1945, when as a result of nationalization it was turned into flats for local employees in state-owned farms. After many problems in the mid-90s, the palace finally became a private property and consequently was rebuilt and repaired. So far, the greatest event in Krobielowice was a wedding of Swiss Countess Tatiana Christiana Rochedii de Weck, whose mother – née von Blücher – was born in Krobielowice. Among the guests were members of aristocratic families: the Lubomirski, the Schaffgotsch,



the Blüchers and the grandson of the last king of Egypt Sacha Orloff.

### Present

The Palace houses a hotel with 50 beds. Forests, fields and ponds surrounding the property are perfect for communing with nature and relaxation. These areas have been protected as a Landscape Park of Bystrzyca Valley. Additionally, it is available for hunting trips.

[www.palackrobielowice.com](http://www.palackrobielowice.com)

## 13. Krzyżowa Palace

### Location

Krzyżowa Palace is situated not far from Wrocław, close to Świdnica, on a small hill above the river Piława.

### Historical background

In 1720 Sigismund von Zedlitz und Lepie had a palace built in place of an old mansion. A stone building was erected on a rectangular plan, with two floors, basement and attic apartments. Worthy of attention are coat of arms of the families von Moltke and von Burt (the previous owners of the property) attached above the door. The family von Moltke was known for their opposition to Hitler's politics, their ancestral cemetery and mausoleum are placed in the adjoining park. After the war the building was taken over by the state, turned into state farms and began falling into ruin. On July 12, 1989 Krzyżowa Palace hosted a meeting of the heads of German and Polish government: Helmut Kohl and Tadeusz Mazowiecki. In 1990, the Krzyżowa Foundation for European Understanding was set up, aiming at integrating young people from around the world.

### Present

The palace was rebuilt and restored thanks to the efforts of the Krzyżowa Foundation. Construction and renovation works have cost 29 million marks. It included, among others, renovation of beautiful frescoes with plant-like motifs on staircase walls. There is also a Youth Meeting House and a hotel with restaurant.

[www.krzyzowa.org.pl](http://www.krzyzowa.org.pl)



## 14. Łomnica Palace

### Location

The palace is situated in Łomnica, in the Valley of Jelenia Góra, in the heart of the Valley of Palaces and Gardens.

### Historical background

The first mention of Łomnica village dates from the fourteenth century. From 1391 to 1650 the land belonged to the famous Silesian family von Zedlitz. Then Baron de Thomagnini became the property owner and under his government the so-called Gothic

Large Palace was erected. In 1835 the palace was passed to Carl Gustav von Ernst Küster, the Prussian ambassador at the Sicilian Court. The palace remained in his family until 1945. After the war it was turned into a school and stayed that way until the end of the 1970s. Due to the disastrous condition of the building the school was moved elsewhere and the palace itself was in decline. In 1991 the building was purchased by a descendant of the pre-war owners – Ulrich von Küster.

### Present

The restored palace today houses a cosy hotel and restaurant. Wall paintings, marble imitation and chandeliers were all restored. Likewise, the surrounding park (9 hectares) was restored into its previous beautiful appearance and splendour. The manor has an interesting offer for visitors: a workshop with traditional crafts, handicraft shop with regional products and granary museum with exhibition space.

[www.palac-lomnica.pl](http://www.palac-lomnica.pl)



## 15. Mysłakowice Palace

### Location

The village lies in the valley of Jelenia Góra in the Łomnica River. The Palace is one of the biggest attractions of the village.

### Historical background

The origins of today's palace can be found in the eighteenth century, when Leopold Maximilian von Reibnitz ordered to reconstruct the existing Baroque manor house. The next owner expanded the residential areas further. Thanks to a glazed conservatory and terrace the building combined harmoniously with the surrounding park. The palace owes the Neo-Gothic appearance to the kings of Prussia: Frederick William III and Frederick William IV.

### Present

The owner of the building is the Mysłakowice district, and since 1951 it houses a school. The outer royal character of the building has been preserved from the former times, the interior, how-



ever, was significantly degraded. The spatial arrangement was changed in order to serve the educational institution purposes.

[www.myslakowice.edu.pl](http://www.myslakowice.edu.pl)

## 16. Paulinum Palace



### Location

The palace is situated very close to the centre of Jelenia Góra. However, a large park effectively separates it from the urban noise, creating an enclave of peace and greenery.

### Historical background

The palace dates from the nineteenth century when it was the property of the family Kramst. The German industrialists intended to own an ancestral seat, refer-

ring to the appearance of the Saxon castle-palace complexes. The building was fortunate to have survived World War II, but was destroyed in the great fire that broke out in the 1960s. In 2002 the company "Paulinum" took it over and turned into a luxury hotel.

### Present

The owner carried out an extremely expensive and time consuming renovation. Fortunately, it was possible to reproduce most of the Neo-Renaissance details and embellishments, the Paulinum's mark in its heyday. The guests not only can stay in the historical stylish apartments, but can also choose from an exquisite menu of the restaurant. Unusual park surroundings and wide range of conference rooms make the palace the site of prestigious conferences and symposia.

[www.paulinum.pl](http://www.paulinum.pl)

## 17. Palace in Sobótka-Górka

### Location

Sobótka-Górka is part of the village Sobótka, situated at the foot of Mount Ślęza, about 30 km from Wrocław.

### Historical background

The present palace was built in the place of a chapel of the Augustinian Order, founded in 1121 by Peter Wlast. In the nineteenth century the interior of the chapel and parish buildings were renovated after the Thirty Years' War damages. In 1810 the property was passed to Ernest von Littwitz, who adapted it for residential purposes. The current Neo-Renaissance style was funded by Eugene von Kulmitz.

### Present

The palace houses a hotel and restaurant. The interior is ornamented with well-preserved Gothic and Renaissance decorations. Inside the building there is a medieval chapel. During maintenance work in the immediate vicinity of the palace there were found some residues



of tower and walls foundations that remained of a medieval fortress.

[www.zamki.net.pl](http://www.zamki.net.pl)

## 18. Staniszów Palace

### Location

Staniszów village is delightfully situated in Łomnickie Hills in Jelenia Góra Valley.

### Historical background

The first mention of Stanisów village dates back to 1395 when it was owned by the Dukes Reiss. The palace was built between 1784 and 1787 at the order of Count Heinrich von Reiss. It was created as an impressive mansion, surrounded by 194 hectares of park with artificial cave, hermitage and hanging rocks. Magnificent landscape and the view to the Karkonosze Mountains on one side and the picturesque Jelenia Góra Valley on the other made this place a favourite destination for visitors and local inhabitants.

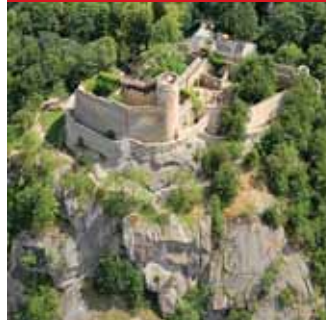
### Present

By the end of World War II Stanisów was considered the most beautiful village in the Jelenia Góra Valley.

[www.palacstaniszow.pl](http://www.palacstaniszow.pl)



## 19. Chojnik Castle



### Location

The stronghold is located at the peak of Chojnik Mountain near Jelenia Góra – Sobieszów. The road to the castle leads through a picturesque gorge.

### Historical background

The castle dates back to the thirteenth century, when Duke Boleslaw II the Bald ordered to build a hunting lodge with defensive functions. The manor house was replaced with a stronghold around 1355, during the reign of Bolko II. The fortress was small even for those

days, but because of its location in a mountainous area it was extremely difficult to conquer. After the death of Bolko II his widow presented Gutsche Schaff, an ancestor of powerful Silesian family Schaffgotsch with the castle. It remained a family property until August 31, 1675, when it burned down struck by a lightning. The Schaffgotsch moved their ancestral seat to Cieplice, and the deserted fort fell into ruin.

### Present

In 1822 a shelter that works to this day was set up in the castle. In the ruins you can see remains of the residential part, a massive round tower and the defensive walls. The castle never had a well, therefore water had to be collected and stored in special rock tanks. One of their residues can be found in the lower castle. Sometimes, on a bright moonlit night, you can also see the ghost of a knight, who lost his life in full gear trying to ride around the castle on horseback to win the hand of a beautiful but ruthless princess Kunegunda. So says the legend ...

[www.chojnik.pl](http://www.chojnik.pl)

## 20. Schaffgotsch Palace in Cieplice

### Location

Cieplice is an administrative district of Jelenia Góra. It is the oldest Polish spa town, famous for its medicinal waters.

### Historical background

The Palace in Cieplice acquired significance in 1675 after the fire in Chojnik Castle and the Schaffgotsch family transfer of their ancestral seat from Chojnik to Cieplice. The Renaissance building was rebuilt in 1720 and received a Baroque appearance. The garden was enriched with arbour and fountains. In 1792 the palace was demolished and in its place a three-storey Neoclassical mansion was erected. In this form the palace has survived to this day.

### Present

Many of its original architectural and decorative elements survived inside the building, e.g. the Empire stucco in the great ballroom. After World War II it housed a boarding school, and then a holiday home for the authorities. In the



mid-eighties, the palace was taken over by the University of Technology, which manages the facility until today.

[www.zamki.karr.pl](http://www.zamki.karr.pl)

## 21. Grodziec Castle



### Location

Grodziec Castle is situated on an extinct volcano hill (389 m) in Grodziec, in Kaczawa Upland.

### Historical background

The first wood-and-earth fortified town appeared here in the Middle Ages. During the reign of Henry the Bearded it was replaced with a brick castle. After being captured and looted by the Hussites it was bought by the Duke of Legnica Frederick I, who had it modernized and expanded. As a result it became one of the finest Gothic-Renaissance mansions in Silesia. Destroyed again during the Thirty Years' War, it had no luck with the subsequent owners. In 1800 on the order of Duke John Henry VI von Hochberg began the first major restoration work. Thus in the nineteenth century it became a fashionable tour destination.

### Present

After the fire in 1945 the castle was partially restored and opened for tourism. Today it is owned by the Zagrodno municipality.

[www.grodziec.pl](http://www.grodziec.pl)

## 22. Oleśnica Castle

### Location

Oleśnica, a town near Wrocław.

### Historical background

The castle was built in place of a Gothic fortress built by Italian and German craftsmen between 1542 and 1616. The building, decorated with Renaissance terraces and galleries, can compete with the most impressive residences in Europe. Decorated with chimneys thirteenth-century clock tower matches the building perfectly. The castle's



construction was probably started by Konrad I of Oleśnica, but it gained the magnificent appearance thanks to the descendants of the Czech King George of Poděbrady, who took over the Duchy of Legnica after the local Piast line died out. While the castle was the seat of the Württemberg family, it was repeatedly modernized and reconstructed. Before the outbreak of World War II the Hohenzollerns used it as a summer residence.

### Present

After the war the castle was turned into prison, where Hungarian and Italian prisoners of war were held. Then it housed a branch of the Soviet Red Cross and then, for a few years, a school. Today it is the Voluntary Labour Corps registered office.

The castle complex includes an internal courtyard, the palace gate and gateway, or barbican. In the former place of moats once filled with water today spreads a beautiful park.

[www.olesnica.pl](http://www.olesnica.pl)

## 23. Wojanów Palace

### Location

The palace is situated close to Jelenia Góra, in the Bobrzański Landscape Park

### Historical background

The first historical mention of the property in Wojanów comes from 1281 when it belonged to the knight Eberhard von Schildau. Subsequent owners of Wojanów belonged to the Silesian family von Zedlitz, in whose possession it remained until 1727. Later, the palace was repeatedly passed from one owner to another. The most serious reconstruction took place in 1831, when the then master of the estate, Karl Albrecht Icke, dramatically changed the design of buildings: from a fortified residence into a romantic Gothic-style manor. In 1839 Prussian King Friedrich Wilhelm III bought the property for his daughter, Louise of the Netherlands. After World War II the palace was plundered and later turned into an office building of a State Farm. In 2004 the fire broke out and the greatly damaged palace was purchased by the company "Wojanów Palace" and thoroughly renovated.

### Present

The refurbishment of Wojanów Palace was one of the largest and most comprehensive restorations of palace complex in Poland. The palace was restored to its former glory and with it all the objects within the estate: stables, granary, outhouse, carriage house and barn.

Today the palace houses an exclusive hotel for more than 200 guests, two restaurants, cafe, wine bar, tea room and a spa. The building also organizes conferences and events for every occasion.

[www.palac-wojanow.pl](http://www.palac-wojanow.pl)





photographs: DOT archive  
content: Anathema  
factual revision:  
Rajmund Papiernik  
design & typesetting:  
ORFIN STUDIO



Dolnośląska Organizacja Turystyczna  
Lower Silesian Tourist Organization  
ul. Ostrowskiego 9, 53-238 Wrocław  
tel. +48 71 7939722  
+48 71 7939724  
fax +48 71 7939728  
e-mail: [dot@dot.org.pl](mailto:dot@dot.org.pl)  
[www.dot.org.pl](http://www.dot.org.pl)



**PROGRAM  
REGIONALNY**  
NARODOWA STRATEGIA SPÓJNOŚCI



**DOLNY  
ŚLĄSK**

**UNIA EUROPEJSKA**  
EUROPEJSKI FUNDUSZ  
ROZWOJU REGIONALNEGO



„European Funds for Lower Silesia Development”

Project no. WND-RPDS 06.05.00-02-002/10

Title: Promotion of Lower Silesia's Quality Tourist Products  
on European and Polish Market.

Value of the project: 958 713,51 PLN, ERDF contribution: 627,245.50 PLN  
Beneficiary: Lower Silesian Tourist Organization, ul. Ostrowskiego 9, p. 203, 53-238  
Wrocław, tel. 71 793 97 22, fax. 71 793 97 28 [dot@dot.org.pl](mailto:dot@dot.org.pl), [www.dot.org.pl](http://www.dot.org.pl)

Project co-funded by European Union with European  
regional development fund as part of  
Dolnośląskie Regional Operational Programme 2007–2013